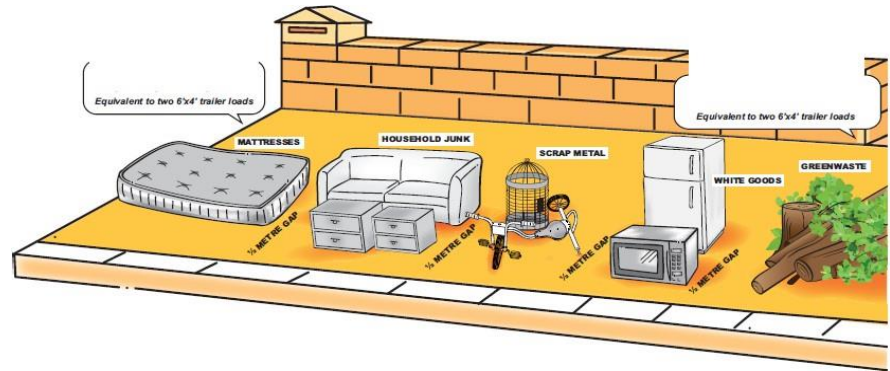


WHAT DO I NEED TO DO?

- ✓ Sort your waste into piles on the verge
- ✓ Do not obstruct the footpath, your normal bin service or the line of sight for motorists.
- ✓ Do not place any waste near sprinklers, water meters, mail boxes, power poles, trees etc
- ✓ Do not leave items not intended for Bulk Collection on the verge, eg; bikes.



WHAT WE WILL COLLECT:

Up to two cubic metres of waste (equivalent of two 6'x4' trailer loads)

- ✓ Refrigerators & White Goods – Fridges and freezers do NOT need to be regassed.
- ✓ Scrap Metal – Wire remnants must be safely and securely bundled. Maximum length 1.8 metres.
- ✓ Mattresses
- ✓ Household Furniture & General Junk – Couches, tables, televisions, vacuum cleaners, carpet etc. Max 1.8metres.
- ✓ Greenwaste – Up to two cubic metres of Greenwaste. (equivalent of two 6'x 4'trailer loads)
Branches, cuttings, and leaves. Maximum length 1.5metres , Max diameter 150mm,. Box or bag leaves and small vegetation. Stack ends towards street.

WHAT WE WON'T COLLECT:

- More than two trailer loads of green waste
- Waste that is NOT correctly separated
- NO bricks, Rubble, Concrete or cement
- NO sand, soil or lawn sods
- NO foodstuffs or Household waste
- NO glass or mirrors
- NO gas bottles or cylinders
- NO car bodies/parts , Tyres/Batteries
- NO Asbestos or other Fibrous cement
- NO Hazardous Waste or Liquids (Paint, Oil, Garden chemicals, pesticides, oil-filled radiators/heaters etc.)
- NO small items that need to be boxed or bagged for collection - e.g., Clothing, books, 'knick-knacks'.