

# HOME IN EAST NEWMAN

## VISION AND PRINCIPLES

REVISION B  
20/11/20

HAMES  
SHARLEY

# HOME IN EAST NEWMAN

## VISION AND PRINCIPLES

### COPYRIGHT STATEMENT 2020

The information contained in this report has been prepared with care by our company, or it has been supplied to us by apparently reliable sources. In either case, we have no reason to doubt its completeness or accuracy. However, neither this company nor its employees guarantee the information, nor does it or is it intended to form part of any contract. Accordingly, all interested parties should make their own inquiries to verify the information, as well as any additional or supporting information supplied, and it is the responsibility of interested parties to satisfy themselves in all respects.

This report is for the use only of the party to whom it is addressed and Hames Sharley disclaims responsibility to any third party acting upon or using the whole or part of its contents.

This document has been prepared for the use of Creating Communities Australia only. Copyright © 2020 by Hames Sharley (WA) Pty Ltd. No part of this document shall be reproduced in any form without written permission of Hames Sharley.

### ENQUIRIES

Ryan Dunham  
Project Leader

Hames Sharley  
Level 2/50 Subiaco Square Road  
Subiaco, WA 6008

Phone: 08 9381 0219

Email: [r.dunham@hamessharley.com.au](mailto:r.dunham@hamessharley.com.au)

Web: [www.hamessharley.com.au](http://www.hamessharley.com.au)

### PROJECT DETAILS

Job number	44317
Client	Creating Communities Australia
Prepared by	RT
Checked by	RD

### DOCUMENT CONTROL

Revision	File name	Document date
A	Vision and Principles - DRAFT	25/09/20
B	Vision and Principles - FINAL	19/11/20



### LAND OWNERSHIP MAPPING

This document reviews the current Land Ownership throughout the East Newman Catchment Zone and enables an understanding of where potential built form changes may occur.



### LANDSCAPE STRATEGY

This document considers the landscape strategy for East Newman and is built on community, sustainable and climate responsive principles to achieve long-term outcomes.



### VISION AND PRINCIPLES

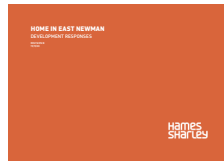
This document presents an initial vision and principles for the development and planning approach for East Newman.

PRESENTED IN THIS REPORT



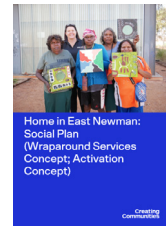
### OPPORTUNITIES & CONSTRAINTS

This document outlines several early considered opportunities and constraints for potential future planning, urban design, landscape, and architectural outcomes for the Home in East Newman project.



### DEVELOPMENT RESPONSES

This document outlines the range of potential approaches that may be adopted to future planning and built form to realise improvements within East Newman.



### SOCIAL PLAN (WRAPAROUND SERVICES CONCEPT, ACTIVATION CONCEPT)

A combined plan for addressing social needs within East Newman. This plan combines a wrap-around services concept, activation concept and background to the social context.



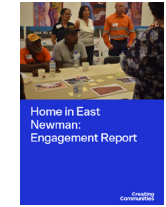
### CONNECTION TO SURROUNDING AREAS

This document considers approaches to the existing connections to surrounding land, development and facilities within a walkable catchment from East Newman.



### VILLAGE CENTRE

This document presents the Village Centre proposal.



### ENGAGEMENT REPORT

Key findings and detailed data on all community engagement conducted to inform the Home in East Newman project.



### HOUSING ANALYSIS

This document reviews the existing character and type of existing housing provided in East Newman and enables a basis for future housing approaches to be considered from.



### HOUSING APPROACHES

This document presents a number of principles for the future development of housing in East Newman along with a number of approaches for future housing and refurbishment.

# HOME IN EAST NEWMAN

## VISION AND PRINCIPLES

This document presents an initial vision and principles for the development and planning approach for East Newman. The vision and principles have been developed through engagement in June and September 2020, site visits throughout this time, and one-on-one meetings with a range of stakeholders. The aim of the vision and principles is to guide both the Home in East Newman project and future decision-making for East Newman.

The vision and principles have been formulated through design drivers requiring change and outcomes, which these drivers implement. Each of the drivers and outcomes have been noted under the headings of:

- Planning;
- Urban Design;
- Built Form;
- Village Centre; and
- Landscape.

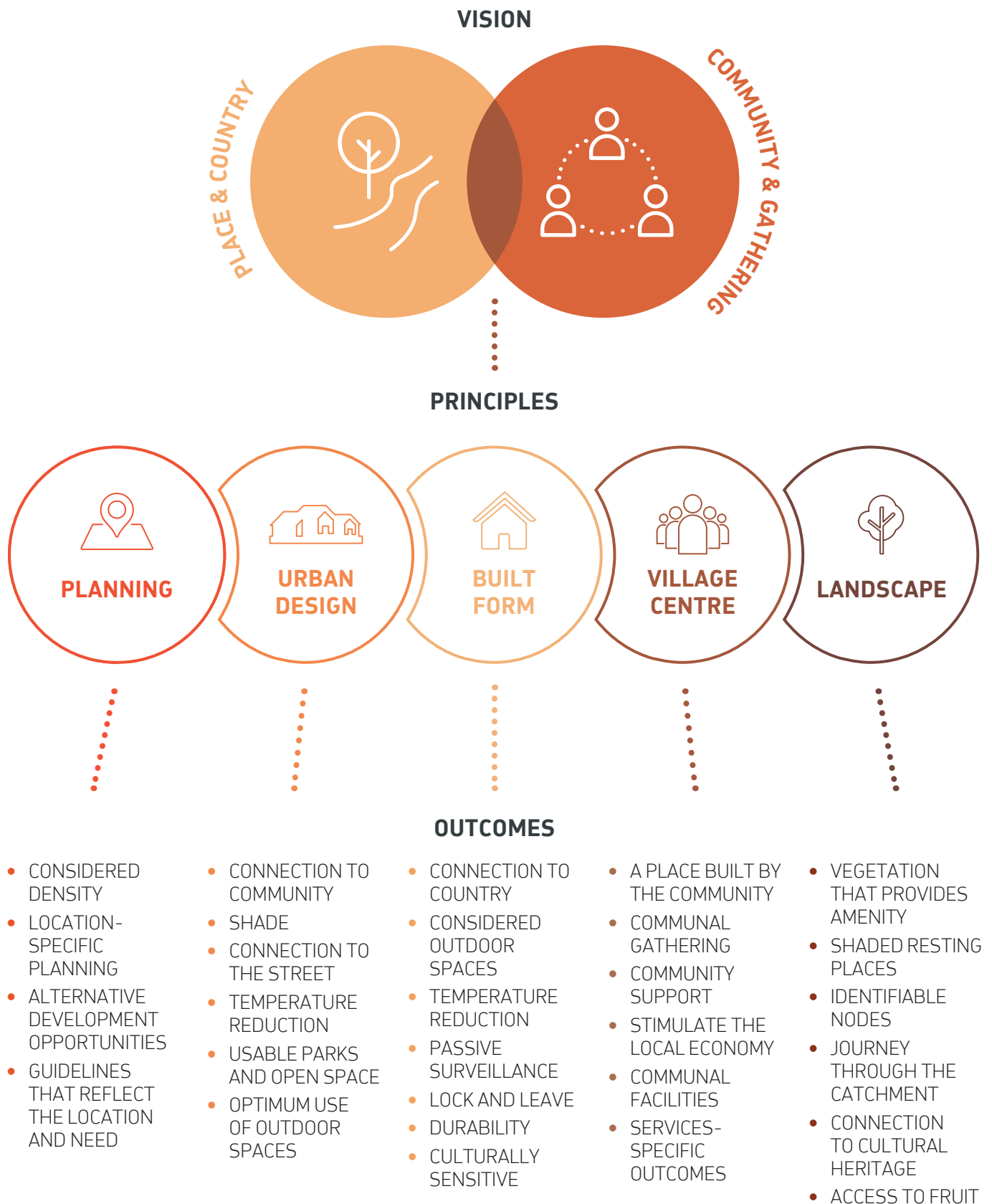
Furthermore, the vision and principles will be tested and amended through future engagement to be held in Newman in October. This document, therefore, is a work in progress and has not been formally tested or endorsed.

# 01

---

VISION

# 1.1 VISION, PRINCIPLES & OUTCOMES



## 1.2 PLACE & COUNTRY

---



01



- cultural connection
- reaction to current planning of East Newman
- drivers for change
- engagement driving these themes
- higher value on outside spaces
- visual connection to the landscape
- open shaded areas, not enclosed
- fruiting trees - live off the land
- nature play parks

## 1.2 PLACE & COUNTRY

02



05



08



11



03



06



09



12



04



07



10



13



### PLACE AND COUNTRY

The above images demonstrate a number of approaches that enable a clear connection to Place and Country, and are considered appropriate responses for the future of East Newman.



## 1.3 COMMUNITY & GATHERING

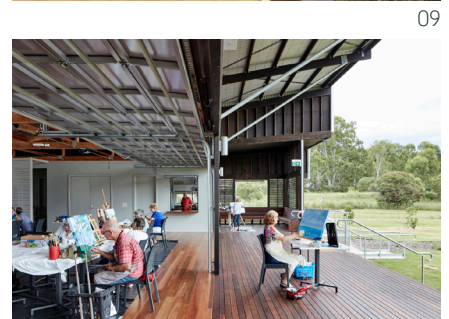
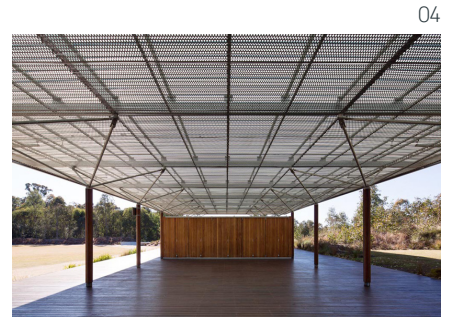
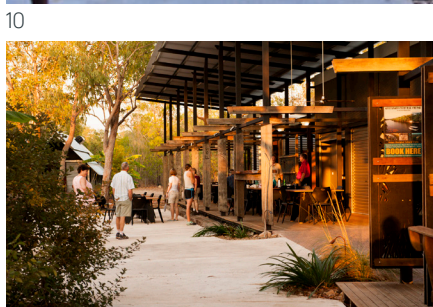


01



- historical connection
- current sense of community in East Newman
- drivers for change
- engagement driving these themes
- fire pit is a source of gathering
- Martu working in East Newman
- community garden
- communal facilities, e.g. bbqs
- education opportunities
- deli services
- destination/activities for youth
- community support
- Newman area is a welcoming community

# 1.3 COMMUNITY & GATHERING



**COMMUNITY AND GATHERING**

The above images demonstrate a number of approaches in that enable a clear theme of Community and Gathering, and are considered appropriate responses for the future of East Newman.

# IMAGES

---

## PLACE AND COUNTRY

1. <https://www.shutterstock.com/image-photo/ghost-gums-against-pilbara-rock-cliff-1328942720>  
Sourced: 24th September 2020
2. <https://architectureau.com/calendar/talk/gold-medal-tour-troppo-to-give-talks-nationally-1/>  
Sourced: 24th September 2020
3. <https://www.ozetecture.org/riversdale-boyd-education-centre> Sourced: 24th September 2020
4. <https://www.architectureanddesign.com.au/projects/houses/upside-down-house> Sourced: 24th September 2020
5. <https://www.dezeen.com/2019/01/24/three-capes-track-hiking-lodges-tasmania-andrew-burns-architecture/> Sourced: 24th September 2020
6. <https://www.anbinik.com.au/index.php/facilities>  
Sourced: 24th September 2020
7. <https://www.ozetecture.org/lovetts-bay> Sourced: 24th September 2020
8. <https://architizer.com/projects/west-kimberley-regional-prison/> Sourced: 24th September 2020
9. <https://i.pinimg.com/originals/34/99/cf/3499cf7f3e6ee5407711bfbd31e003ee.jpg> Sourced: 24th September 2020
10. <https://divisare.com/projects/331994-richard-leplastrier-michael-nicholson-angophora-house>  
Sourced: 24th September 2020
11. <https://www.dezeen.com/2019/01/24/three-capes-track-hiking-lodges-tasmania-andrew-burns-architecture/> Sourced: 24th September 2020
12. <http://dunnhillam.com.au/desert-house-alice-springs> Sourced: 29th September 2020
13. <https://www.habitusliving.com/architecture/around-the-world/bay-fires-lodge> Sourced: 24th September 2020

## COMMUNITY AND GATHERING

1. <https://www.socialventures.com.au/blog/martumili-preserving-culture-and-knowledge-through-art/>  
Sourced: 24th September 2020
2. <https://wp.architecture.com.au/tasawards/2016-awards/three-capes-track-cabins/> Sourced: 24th September 2020
3. <https://www.theaustralian.com.au/travel/bay-of-fires-wukalina-walk-tasmania-aboriginal-tours/news-story/eaa2153ae116ffceab15ff0bf457637d>  
Sourced: 24th September 2020
4. <http://www.chrofi.com/project/lizard-log-amenities-events-pavilion> Sourced: 24th September 2020
5. <https://www.anbinik.com.au/index.php/facilities>  
Sourced: 24th September 2020
6. <https://divisare.com/projects/288234-iredale-pedersen-hook-architects-peter-bennetts-walumba-elders-centre> Sourced: 24th September 2020
7. <http://iredalepedersenhook.com/?p=3483>
8. <https://www.makeittasmania.com.au/lifestyle/explore-tasmanias-latest-tourism-jewel-in-the-crown/> Sourced: 24th September 2020
9. <https://architectureau.com/articles/curra-community-hall/> Sourced: 24th September 2020
10. <https://www.anbinik.com.au/index.php/facilities>  
Sourced: 24th September 2020
11. <https://pursuit.unimelb.edu.au/articles/truth-telling-at-garma> Sourced: 24th September 2020

**Hames  
SHARLEY**



ARCHITECTURE  
INTERIORS  
URBAN DESIGN  
PLANNING  
LANDSCAPE

[www.hamessharley.com.au](http://www.hamessharley.com.au)